

Figure 4A: Existing Land Use
PASQUOTANK COUNTY, NC

Legend

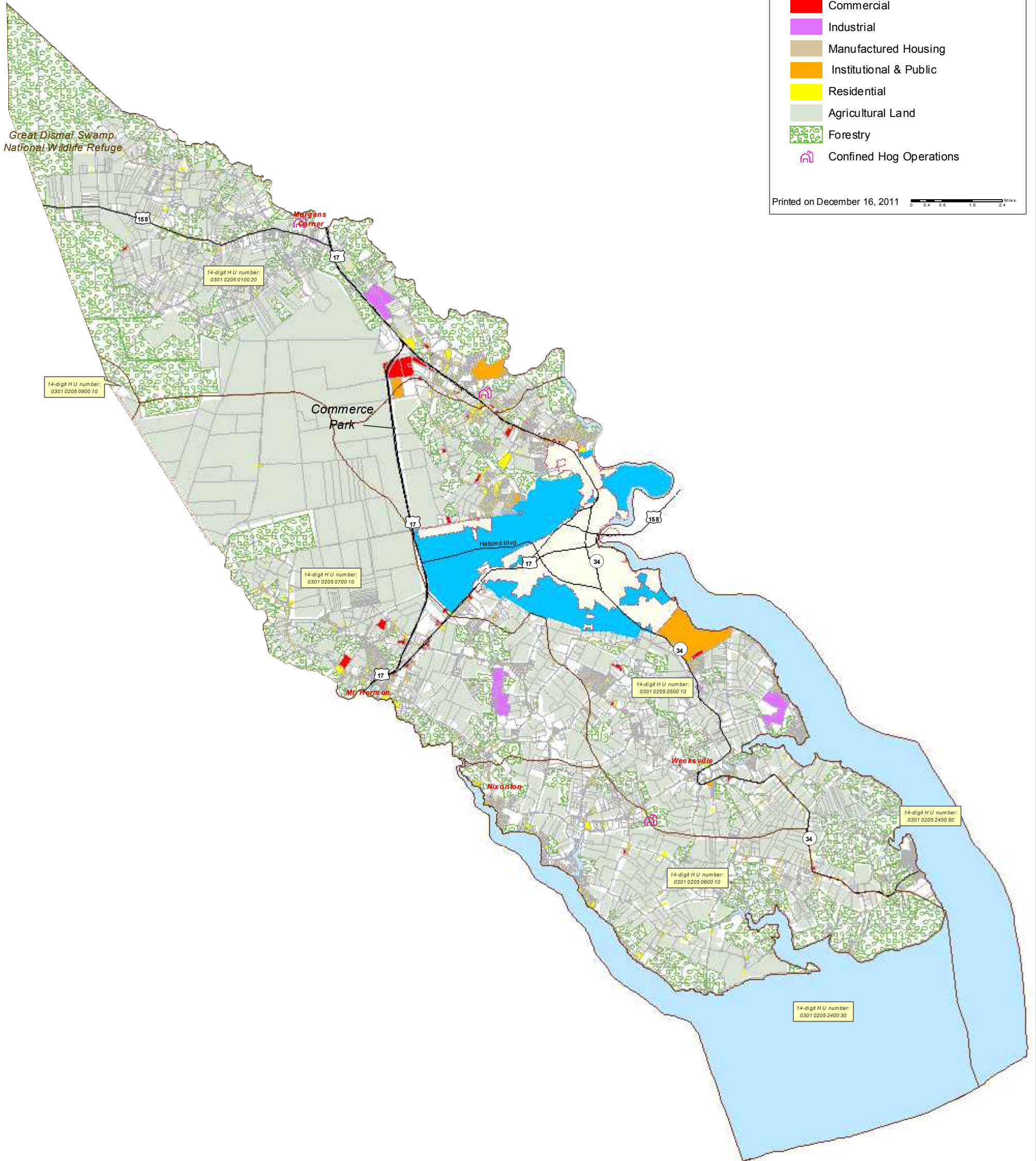
- Major Roads
- ▭ USDA Hydrological Units
- ▭ Elizabeth City Corporate Limits
- ▭ Elizabeth City Planning Jurisdiction



Existing Land Use

- ▭ Undeveloped
- ▭ Commercial
- ▭ Industrial
- ▭ Manufactured Housing
- ▭ Institutional & Public
- ▭ Residential
- ▭ Agricultural Land
- ▭ Forestry
- ▭ Confined Hog Operations

Printed on December 16, 2011



The preparation of this map was financed in part through a grant provided by the North Carolina Coastal Management Program, through funds provided by the Coastal Zone Management Act of 1972, as amended, which is administered by the Office of Ocean and Coastal Resource Management, National Oceanic and Atmospheric Administration.