



Map 5

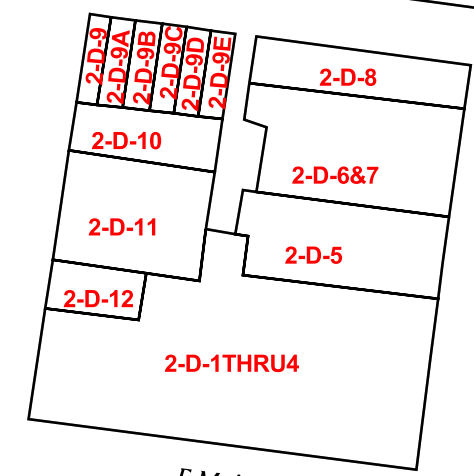
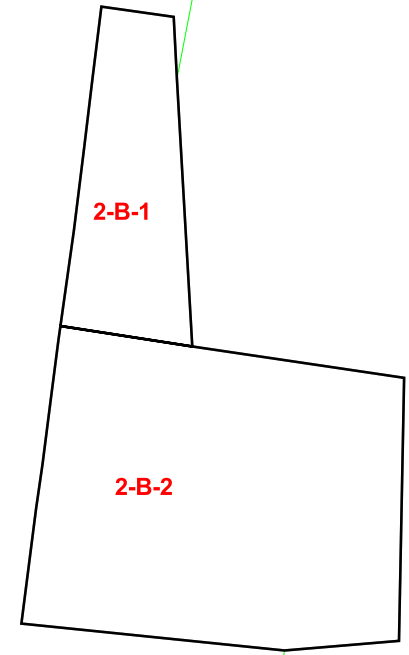
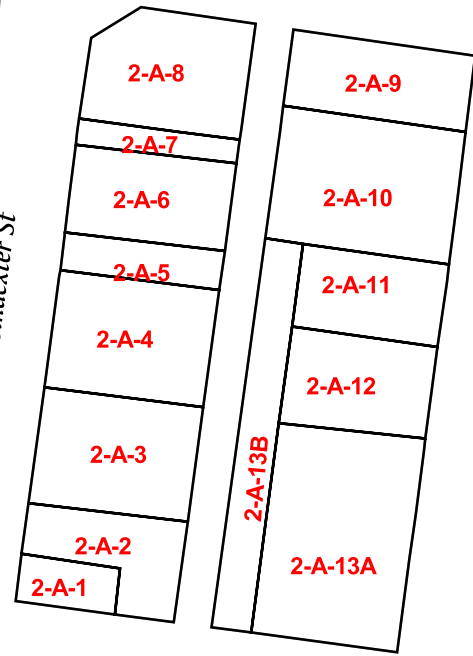
E Elizabeth St

N MLK (Martin) St

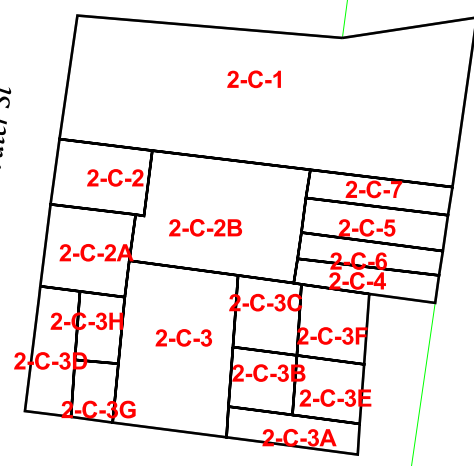
N Poindexter St

E Colonial Ave

Map 1



N Water St



Pasquotank River

E Main St

McMorrine St

Poindexter St

Map 4

Drawn by
 Pasquotank County GIS Department
 PO Box 193
 Elizabeth City, NC 27907

County Line	Property Line	123A Tax Parcel Number
City Limits		45 Lot Number
Township Line		67.8 Acreage

This map was compiled from aerial survey, deed descriptions, ground check and GIS information to be used for tax purposes only. The county assumes no responsibility for the legal accuracy of information contained herein.

Elizabeth City
 Scale : 1" = 100'
 February 2004

2
 Map Number