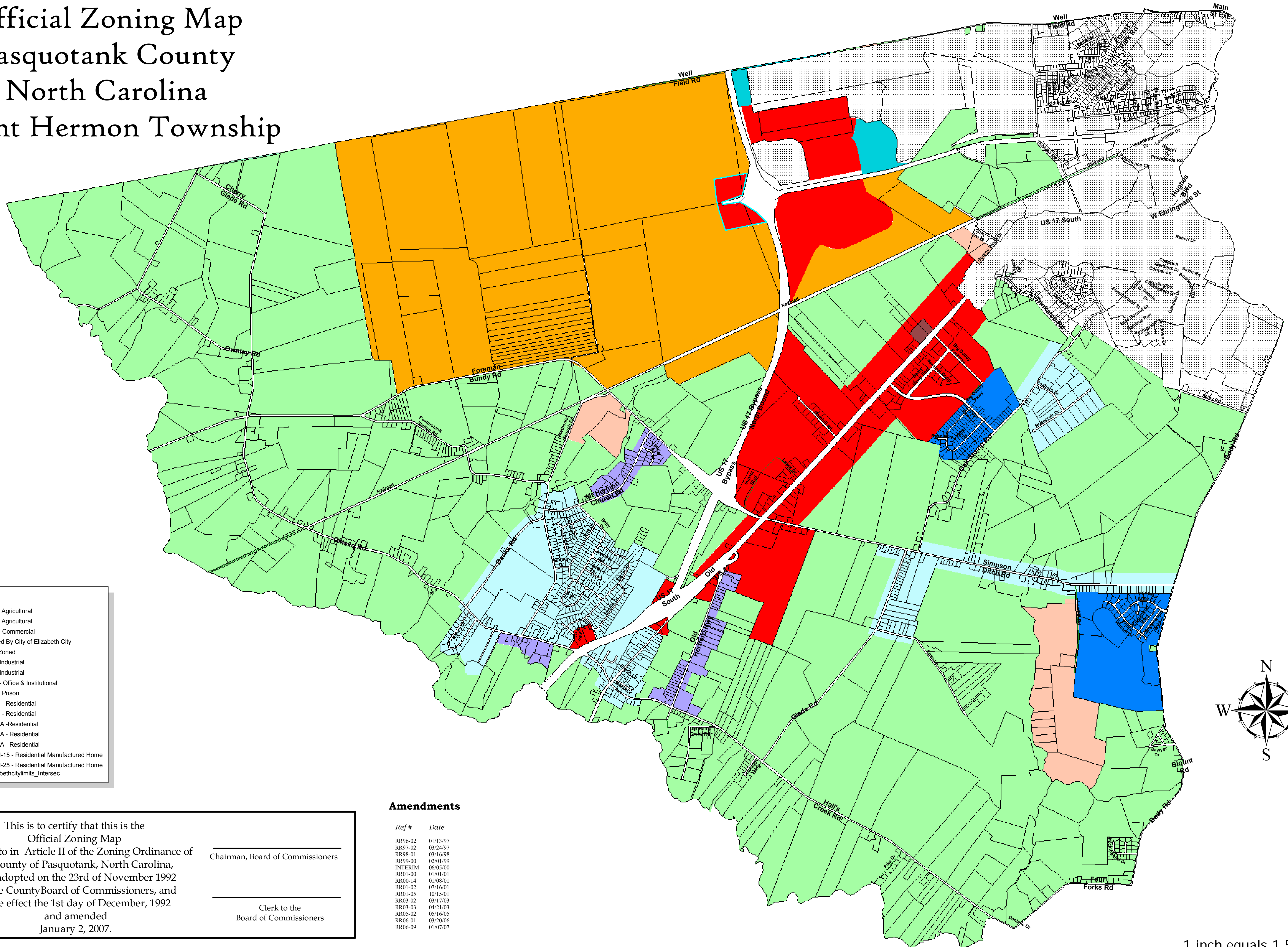


Official Zoning Map

Pasquotank County

North Carolina

Mount Hermon Township



Legend

- A-1 - Agricultural
- A-2 - Agricultural
- C-1 - Commercial
- Zoned By City of Elizabeth City
- Not Zoned
- I-1 - Industrial
- I-2 - Industrial
- O&I - Office & Institutional
- P-1 - Prison
- R-15 - Residential
- R-25 - Residential
- R-15A - Residential
- R-25A - Residential
- R-35A - Residential
- RMH-15 - Residential Manufactured Home
- RMH-25 - Residential Manufactured Home
- elizabethcitylimits_Intersec

Amendments

Ref #	Date
RR96-02	01/13/97
RR97-02	03/24/97
RR98-01	03/16/98
RR99-00	02/01/99
INTERIM	06/05/00
RR01-00	01/01/01
RR00-14	01/08/01
RR01-02	07/16/01
RR01-05	10/15/01
RR03-02	03/17/03
RR03-03	04/21/03
RR05-02	05/16/05
RR06-01	03/20/06
RR06-09	01/07/07

This is to certify that this is the
 Official Zoning Map
 referred to in Article II of the Zoning Ordinance of
 the County of Pasquotank, North Carolina,
 duly adopted on the 23rd of November 1992
 by the County Board of Commissioners, and
 made effect the 1st day of December, 1992
 and amended
 January 2, 2007.

 Chairman, Board of Commissioners

 Clerk to the
 Board of Commissioners

1 inch equals 1,500 feet